



**MITCHELLS**  
REALTY



### 6 Vale Close Craignish QLD

3 2 2

Finding this authentic, low-set Queenslander nestled high on the hill on almost two acres, only a short drive from the thriving heart of Hervey Bay, is a sheer unexpected delight.

Originally custom-built around 1988, this charming home features a wide verandah that wraps around all four sides of the home to capture the prevailing sea breezes and outlook - you can even see the emerald waters of Hervey Bay!

6 Vale Close, Craignish, features: -

- An elevated 7,059m<sup>2</sup> or almost two-acre allotment offering sea views
- An authentic low-set custom-built Queenslander, completed around 1988
- Beautiful hardwood floors, high ceilings, stylish timber French doors and sash windows
- Three spacious bedrooms, all with built-in wardrobes
- The main bedroom features a ceiling fan and a walk-through wardrobe to a classic ensuite with a freestanding clawfoot bath, vanity, and toilet, and there is direct access to the front verandah
- The bathroom is in keeping with this lovely home and features a shower, vanity, and a toilet
- The galley-style, classic timber kitchen features beautiful hardwood bench tops, loads of storage space, and a pantry
- Appliances include a unique Jenn-Air electric cooktop with an integrated ventilation rangehood
- A vast open-plan living and dining area
- An additional formal dining room
- A separate living area or lounge room
- Expansive verandas wrap around all four sides of the home

- A high-entry double-bay carport
- There is plenty of space to add more shedding or a pool
- Potential to add a second dwelling subject to council and local authority approvals
- Potential to subdivide subject to council and local authority approvals

If you LOVE Queenslanders and want your own space and privacy - you NEED to contact our team NOW, as properties like this rarely become available!

Contact our team NOW to arrange your private inspection or a video walk-through - you will only be disappointed if you miss this one ?

NOTE: Property boundary lines are shown as approximate/indicative only in associated images - please refer to survey plans for full details.

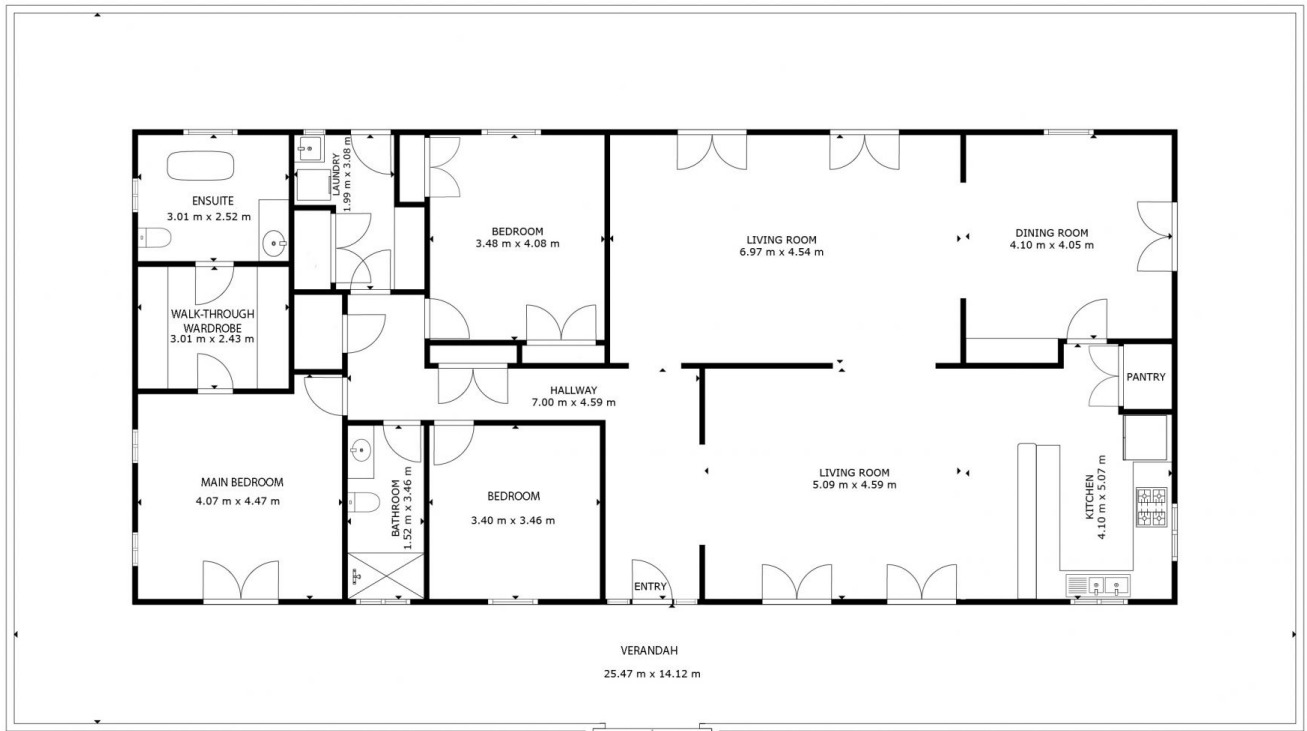
DISCLAIMER: Whilst every effort has been made to ensure the accuracy and thoroughness of the information provided to you in our marketing material, we cannot guarantee the accuracy of the information provided by our vendors, and as such, Mitchells Realty makes no statement, representation or warranty, and assumes no legal liability in relation to the accuracy of the information provided. Interested parties should conduct their own due diligence in relation to each property they are considering purchasing. All photographs, maps, and images are representative only for marketing purposes.

**Price** : Under Contract Offers From \$950,000-  
**Land Size** : 7059 sqm  
**View** : <https://www.mitchellsrealty.com.au/property/6-vale-close-craignish-qld/8097247>



**Scott & Katrina Mitchell**  
**0428 484 499**





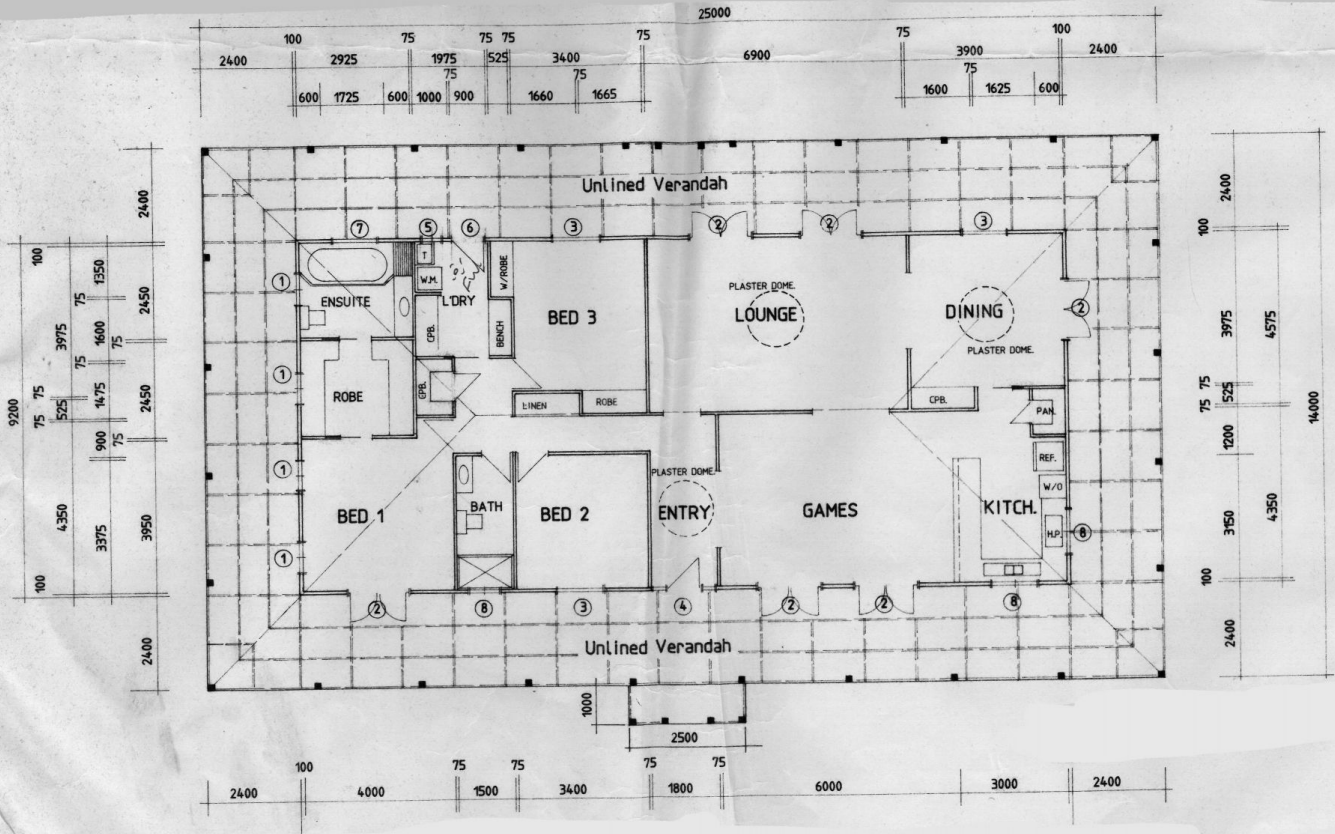
FLOOR PLAN



GROSS INTERNAL AREA  
 FLOOR PLAN: 190 m<sup>2</sup>  
 EXCLUDED AREA: DECK: 166 m<sup>2</sup>  
 SIZES AND DIMENSIONS ARE APPROXIMATE, ACTUAL MAY VARY.



# ELEVATION 1



## FLOOR PLAN